

# Jonathan Hunt

ESTATE AGENCY

20 High Street Ware SG12 9BX

Tel: 01920 411090

8 High Street Buntingford SG9 9AG

Tel: 01763 272727

info@jonathan-hunt.co.uk

www.jonathanhunt.co.uk



**Stablegate Frederick Court, Much Hadham, SG10 6FE**

**Price Guide £899,995**

JONATHAN HUNT are pleased to offer this rather unique FOUR BEDROOM DETACHED HOME located just of the high street of this award winning village. The property boasts FIVE RECEPTION ROOMS, three Bathrooms, Utility room and Cloakroom. Externally the property enjoys wrap around gardens, DETACHED DOUBLE GARAGE, parking for four cars and countryside views. An internal viewing is highly recommended to appreciate this versatile home.

Buntingford Branch - Company No. 10303541 VAT No. 10303541

Ware Branch - Company No. 4759215 VAT No. 700174975

# Stablegate Frederick Court, Much Hadham, SG10 6FE

## RECEPTION HALLWAY



## LIBRARY



## CONSERVATORY



## KITCHEN



## BEDROOM



## DINING ROOM



# Stablegate Frederick Court, Much Hadham, SG10 6FE

## BATHROOM



## BEDROOM



## BEDROOM



## LIVING ROOM



## ENSUITE



## VIEWS



## BEDROOM

# Stablegate Frederick Court, Much Hadham, SG10 6FE

## EXTERIOR



## GARDENS



Energy Efficiency Rating	
Current	Potential
Very energy efficient - lower running costs	
(92 plus) <b>A</b>	
(81-91) <b>B</b>	
(69-80) <b>C</b>	
(55-68) <b>D</b>	
(39-54) <b>E</b>	
(21-38) <b>F</b>	
(1-20) <b>G</b>	
	<b>78</b>
<b>67</b>	
Not energy efficient - higher running costs	
England & Wales	
EU Directive 2002/91/EC	

Environmental Impact (CO <sub>2</sub> ) Rating	
Current	Potential
Very environmentally friendly - lower CO <sub>2</sub> emissions	
(92 plus) <b>A</b>	
(81-91) <b>B</b>	
(69-80) <b>C</b>	
(55-68) <b>D</b>	
(39-54) <b>E</b>	
(21-38) <b>F</b>	
(1-20) <b>G</b>	
	<b>78</b>
<b>67</b>	
Not environmentally friendly - higher CO <sub>2</sub> emissions	
England & Wales	
EU Directive 2002/91/EC	



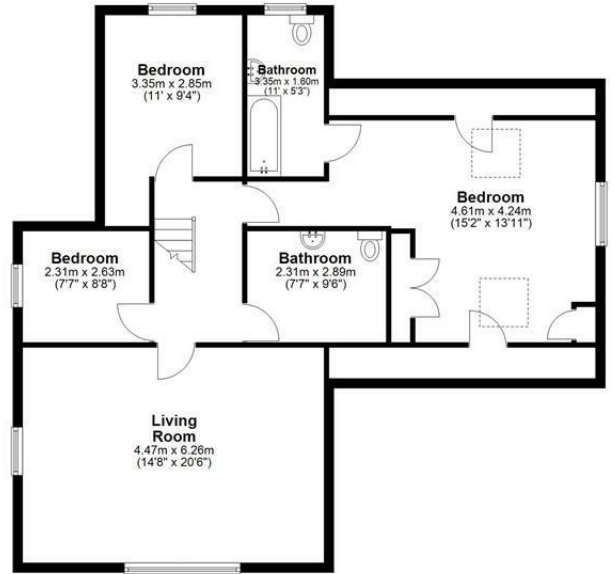
### Ground Floor

Approx. 132.6 sq. metres (1427.4 sq. feet)



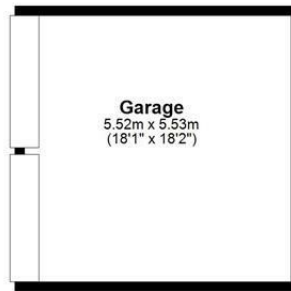
### First Floor

Approx. 97.4 sq. metres (1048.0 sq. feet)



### Second Floor

Approx. 30.6 sq. metres (328.9 sq. feet)



Total area: approx. 260.5 sq. metres (2804.3 sq. feet)

This floor plan has been created by a third party and should be used as a general outline for guidance only. Any areas, measurements or distances quoted are approximate and any intending purchaser or lessee should satisfy themselves by inspection, searches, enquiries and/or full survey as to the correctness of each statement. We accept no responsibility or liability for any loss whatsoever that may arise as a result of this plan and the information contained within.

© @modephoto.uk | www.modephoto.co.uk  
Plan produced using PlanUp.

Stable Gate